

KEY NOTES

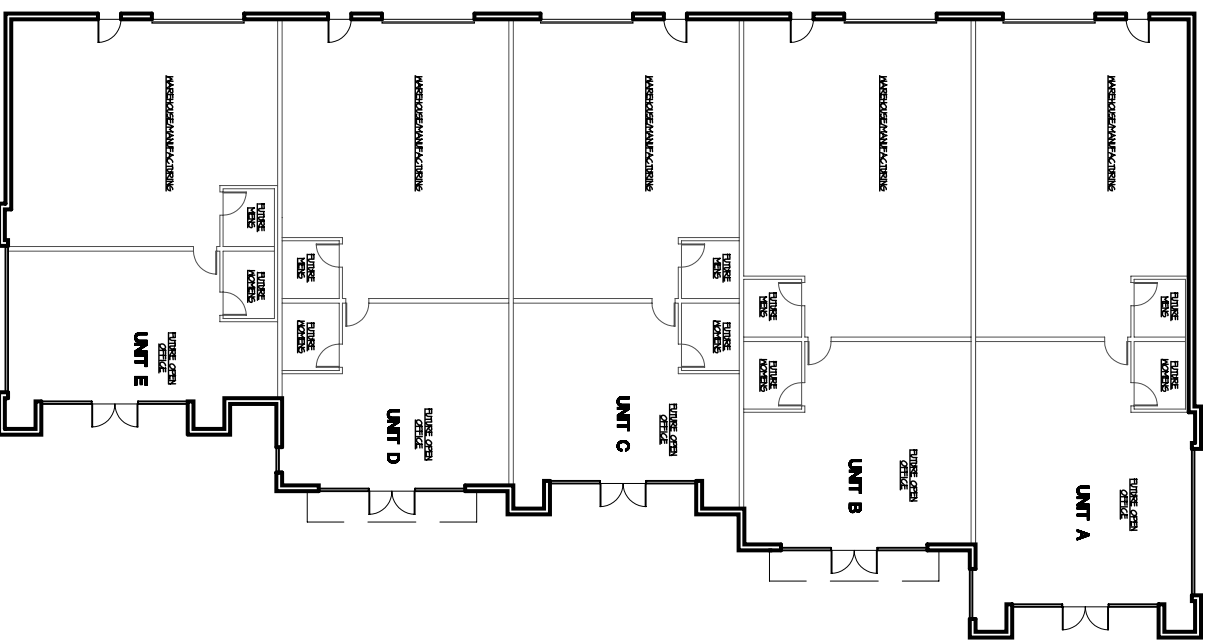
KEYNOTES SHOWN ON ELEVATIONS ARE REPEATATIVE & TYPICAL FOR ALL UNOS.

- 1 SELECTED GLAZEMENT SYSTEM: VISION GREEN 2000 GLASS, SET IN FRONT GLAZED CLEAR BRIGGED FINISH ALUMINUM STOREFRONT SYSTEM
- 2 CORNICE
- 3 SMOOTH FINISH CONCRETE TILT-UP PANEL, PAINTED PER COLOR SCHEDULE BELOW
- 4 APPROXIMATE LINE OF FINISH GRADE
- 5 HOLLOW CORE METAL DOOR, PAINTED TO MATCH BUILDING COLOR
- 6 SPACE FOR SIGNAGE, SIGNAGE BY OTHERS.
- 7 3/4" REVEAL
- 8 CAB FLASHING, PAINTED TO MATCH CORNICE
- 9 METAL OVERHEAD ROLL-UP METAL DOOR, PAINT TO MATCH BLDG. MAIN COLOR
- 10 ACENT COLOR (SEE COLOR SCHEDULE BELOW)
- 11 ARCHITECTURAL ELEMENT BEYOND
- 12 NOT USED
- 13 TOPER ELEMENT EXTENDING ABOVE ROOF LINE TO SCREEN ROOF TOP UNIT FROM VIEW
- 14 PANEL JOINT
- 15 NOT USED
- 16 NOT USED
- 17 NOT USED
- 18 NOT USED
- 19 ACENT COLOR
- 20 METAL CANOPY
- 21 DECORATIVE STONE

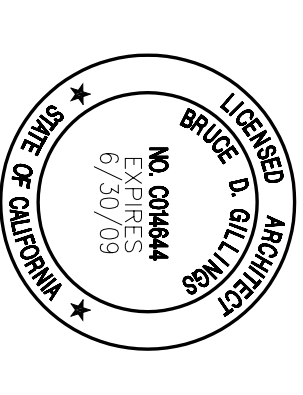
EXTERIOR COLORS

- 1 DE 5000 SPANISH PEANUT
- 2 DEC 734 GOLDEN GATE
- 3 VISION GREEN 2000
- 4 DE 5210 APPLE CIDER
- 5 DEN 341 SWISS COFFEE
- 6 DE 5973 DILL PICKLE
- 7 DEC 706 ROSEWOOD

KEY PLAN



31 JOURNEY, STE 100
ALISO VIEJO, CA 92656
phone 949-498-4938
cellphone 949-392-9781
www.ggmarchitects.com



All production & material project rights reserved

ELSINORE WEST L.L.C.
2838 Via Amapola
San Clemente, CA 92673
ph: 949-218-7908
fax: 949-498-0841

PROJECT NAME: ELSINORE WEST BUSINESS PARK LAKE ELSINORE, CALIFORNIA	
ASSESSOR'S PARCEL NOS. 377-190-002, 003, 004	

REV	DESCRIPTION	BY
1	DESCRIPTION	BY

BID DATE	DE
DRAWN	AL
CHECKED	AL
DATE	11-15-2007
SCALE	1/8" = 1'-0"
JOB NO.	16-05
SHEET NAME	

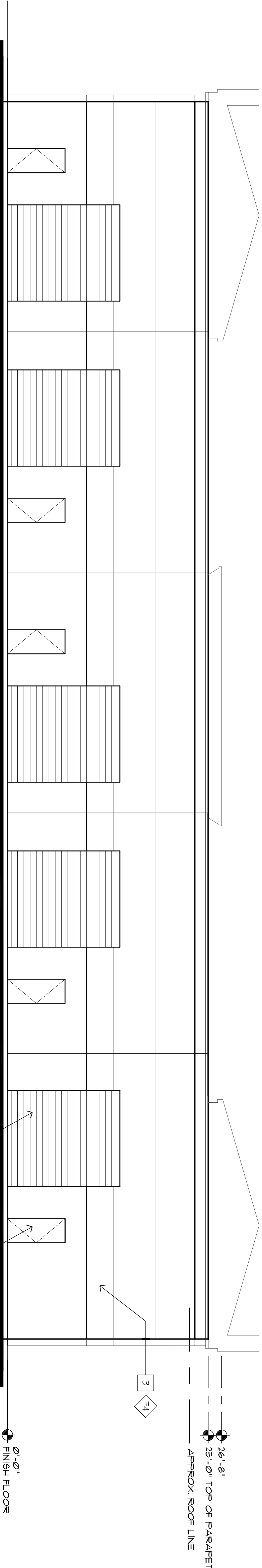
**BUILDING 1
EXTERIOR
ELEVATIONS**

Original Drawing Sheet is 30" x 42"
SHEET

A3.0

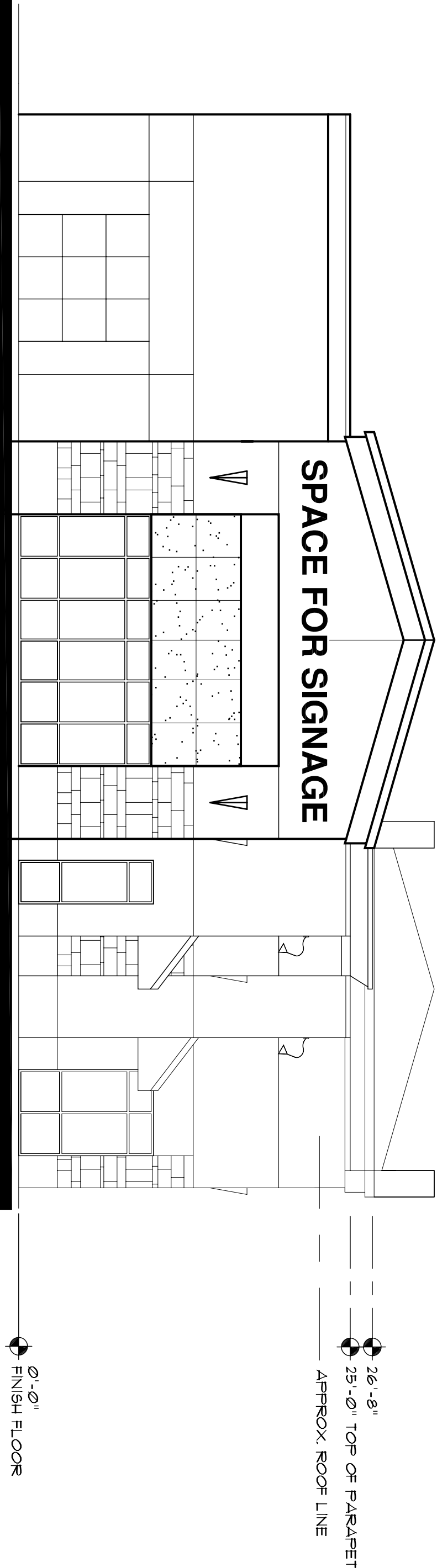


VICINTY MAP



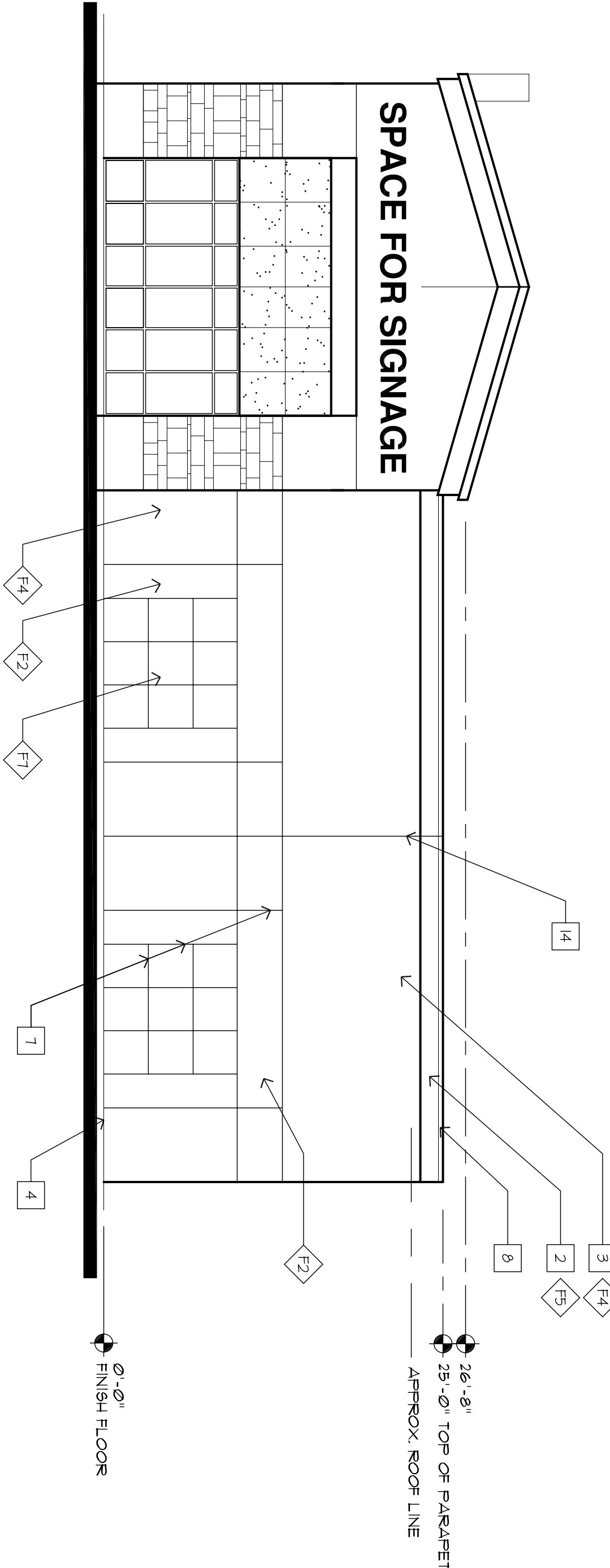
SOUTH ELEVATION

SCALE: 1/8" = 1'-0"



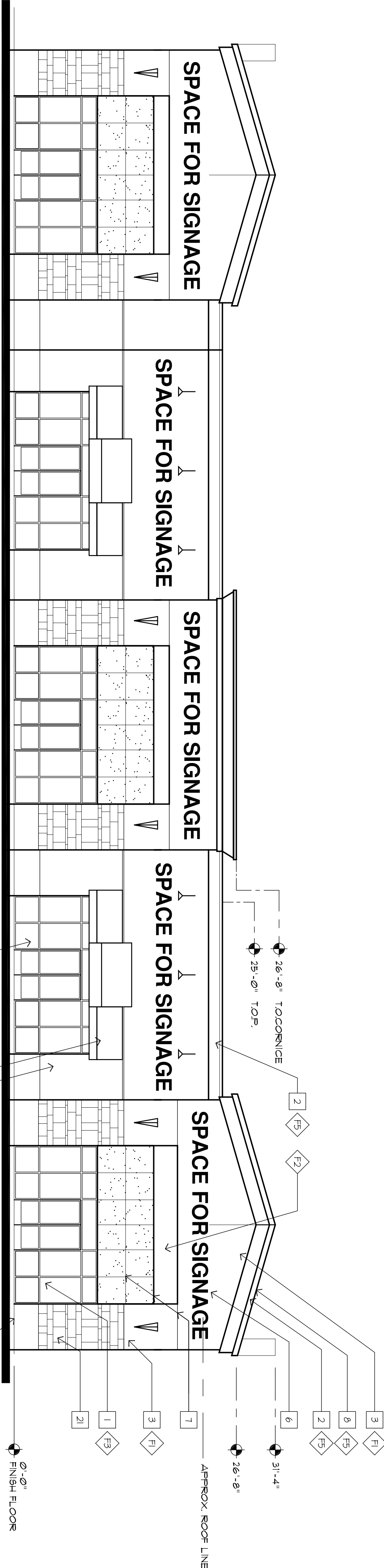
EAST ELEVATION

SCALE: 1/8" = 1'-0"



WEST ELEVATION

SCALE: 1/8" = 1'-0"



NORTH ELEVATION

SCALE: 1/8" = 1'-0"